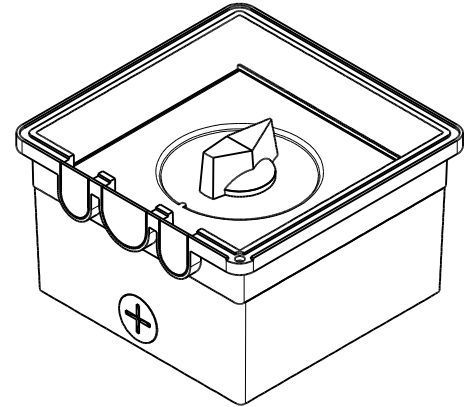
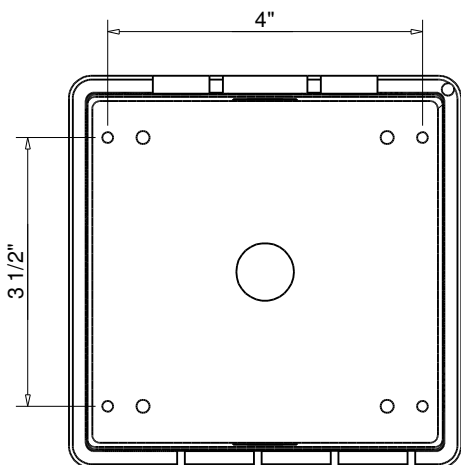
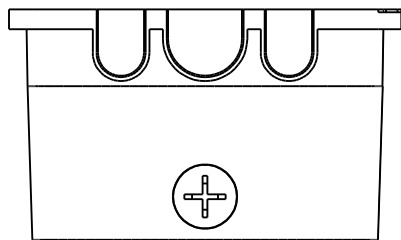
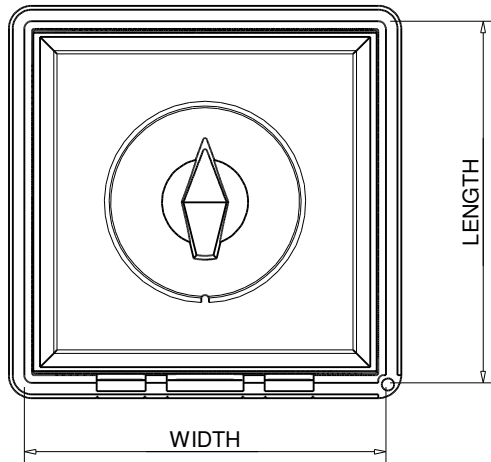




**FIRE INSPIRED®**

**Hearth Products Controls Co**  
CSA CERTIFIED-OUTDOOR USE ONLY  
FOR COMMERCIAL AND RESIDENTIAL USE

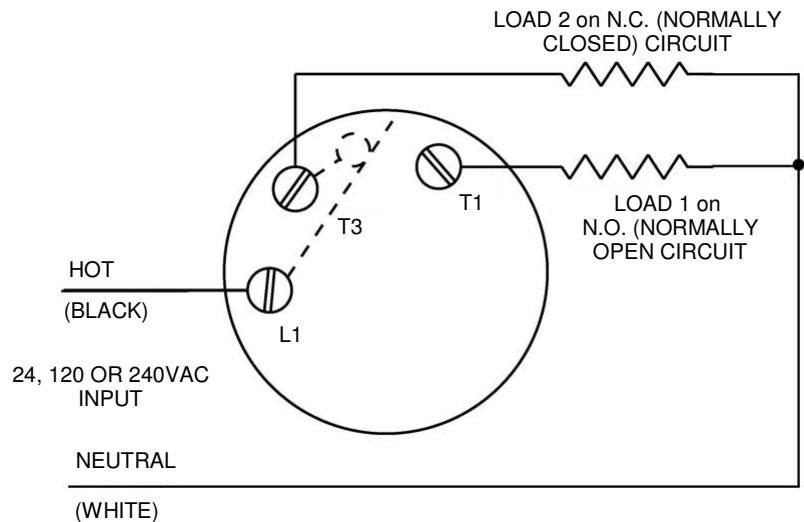
HEARTH PRODUCTS CONTROLS  
2225 LYONS RD.  
MIAMISBURG, OH 45342  
TOLL FREE: 877.585.9800  
PHONE: 937.436.9800  
www.hpcfire.com



**NOTE:**

L1-T1 (N.O.) CIRCUIT IS ENERGIZED WHEN TIMER IS OPERATING (WOUND AND COUNTING DOWN). N.C. CIRCUIT IS OFF.

L1-T3 (N.C.) CIRCUIT IS ENERGIZED WHEN THE TIMER IS AT THE "ZERO" OR REST POSITION. N.O. CIRCUIT IS OFF.

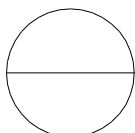


**SPECIFICATIONS**

MATERIAL: METAL  
MOUNTING TYPE: GROUND SCREW  
NUMBER OF MOUNTING HOLES: 4  
NUMBER OF KNOCKOUTS: 3  
NEMA: 3R RATED  
LENGTH: 4.650  
WIDTH: 4.700  
HEIGHT: 5.000 - WITH COVER NOT SHOWN

**NOTE:**

LID NOT SHOWN IN MODEL. LID IS INCLUDED WITH BOTH MODELS.



694 NEMA

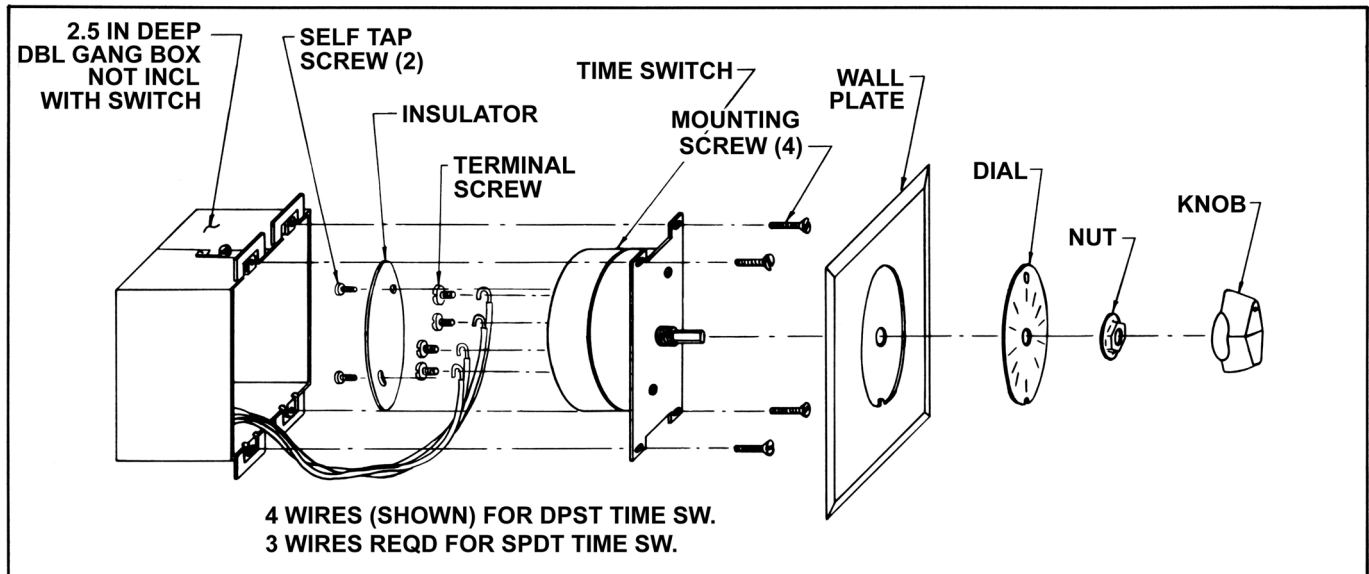
695 NEMA



## INSTRUCTIONS

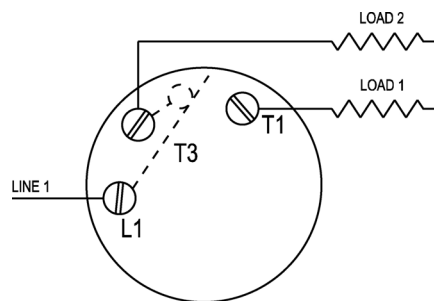
### 694 - 695 Wall Box Time Switches

#### INSTALLATION



**NOTE:** INSTALLATION BY A LICENSED ELECTRICIAN IS RECOMMENDED. INSTALLATION AND USE OF THIS EQUIPMENT SHOULD BE IN ACCORDANCE WITH PROVISIONS OF THE U.S. NATIONAL ELECTRICAL CODE, APPLICABLE LOCAL CODES, AND PERTINENT INDUSTRY STANDARDS.

- 1) **TURN POWER OFF** at circuit breaker or fuse panel.
- 2) Attach wires to terminals with screws provided and screw down tightly. (See wiring diagrams.)
- 3) Cover wired terminals with insulator using self tapping screws provided. (Protection against shorts.)
- 4) Groom wires carefully for insertion of wired assembly into wall box. Fasten with four mounting screws provided.
- 5) Place wall plate, then dial over timer shaft & threaded bushing with the "O" of the dial at the top, and fasten with nut provided.
- 6) Push knob on timer shaft with pointer toward "0".
- 7) **Turn power ON** at circuit breaker or fuse panel.



**Wiring Diagram  
694/695 SPDT  
(Rear View)  
Contact Positions at time "0"**